

# HOBBY DECK LED LIGHT ASSEMBLY INSTRUCTIONS

THANK YOU FOR PURCHASING OUR HOBBY DECK LIGHT. FIRST PLEASE CAREFULLY UNPACK THE PARTS AND FIND A FLAT SURFACE TO PUT ALL THE PARTS. IF YOU HAVE BOUGHT DIFFERENT PAINT OPTIONS PLEASE TRY NOT TO MIX THE PARTS AND ASSEMBLE ONE SHELF AT A TIME. YOUR ITEMS MAY SMELL OF BURNED WOOD WHEN YOU RECEIVE THEM, IT WILL GO AWAY WITH TIME.

## TOOLS THAT YOU MIGHT NEED:

- NAIL FILE- TO SAND AWAY ROUGH EDGES, SPLINTERS, AND TIGHT-FITTING CONNECTIONS.
- RUBBERBANDS OR MASKING TAPE- TO HOLD PARTS IN PLACE WHILE THE GLUE SETS.
- A RUBBER Mallet OR A METAL HAMMER WITH A PIECE OF WOOD.

## GLUE:

- WE RECOMMEND USING THE INCLUDED GLUE TO SECURE THE PARTS.
- MOST BRANDS OF PVA/WOOD GLUE CAN BE USED.
- SUPER GLUE CAN ALSO BE USED, BUT WE DO NOT RECOMMEND IT

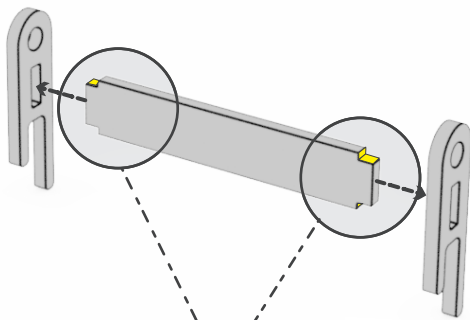
## ASSEMBLY TIPS:

- DRY FIT THE PARTS BEFORE GLUING.
- YOU CAN USE A RUBBER Mallet TO FORCE SOME PARTS INTO PLACE. PLYWOOD IS MUCH STURDIER THAN MDF.
- IF YOU ARE USING A METAL HAMMER, PLACE A PIECE OF WOOD BETWEEN THE HAMMER AND THE PART. THIS WILL HELP TO PREVENT SCRATCHES AND DENTS.
- USE A MOIST CLOTH TO WIPE AWAY EXCESS GLUE.
- USE A BRUSH TO APPLY GLUE WITH MORE PRECISION.
- IF YOU ARE UNABLE TO FIT PARTS TOGETHER, USE A NAIL FILE TO SAND AWAY EXCESS MATERIAL.

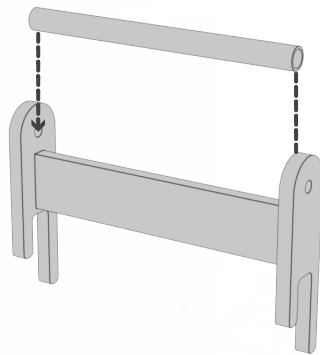
**Do NOT USE** STRONG SOLVENTS OR ISOPROPYL ALCOHOL ON THE PARTS. IT CAN DAMAGE THE VARNISH AND STAIN. IF YOU NEED HELP OR HAVE ANY QUESTIONS FEEL FREE TO CONTACT US AT [INFO@FRONTIERWARGAMING.COM](mailto:INFO@FRONTIERWARGAMING.COM)

PLEASE MAKE YOURSELF FAMILIAR WITH THE INSTRUCTIONS BEFORE ASSEMBLY.

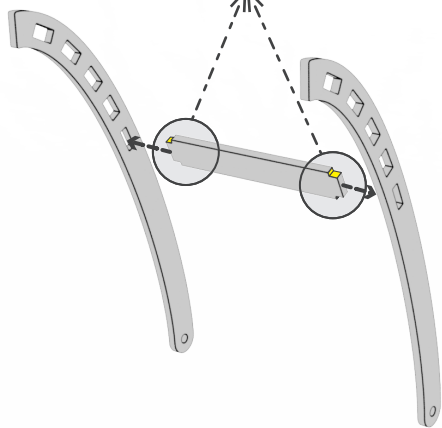
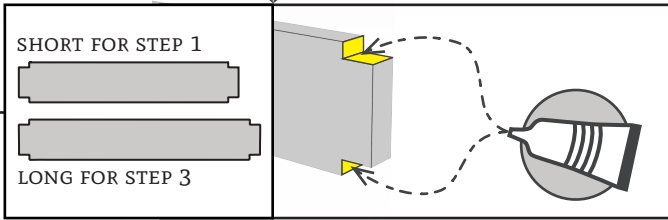
1



2



3



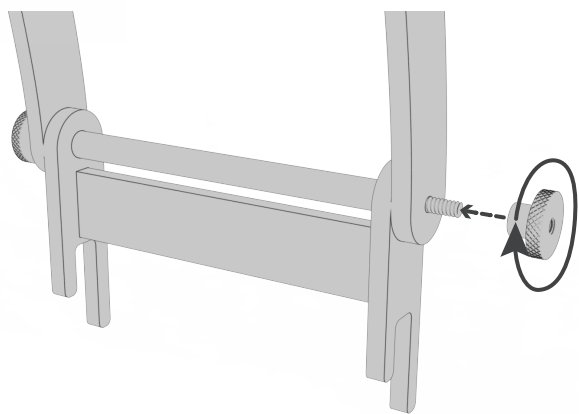
4



5



6



7



8

